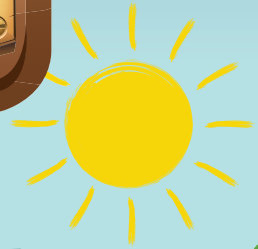
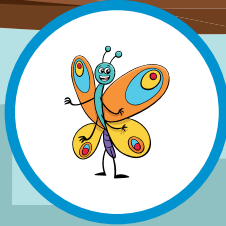


# Swindon Summer Trails Challenge

## Trail #1

Old Town Railway Path  
The Butterfly Trail



**SWINDON**  
BOROUGH COUNCIL

Follow the trail below, answer the question, and at the end of the trail show this leaflet at the partner location to claim your free badge and enter into the prize draw.

**Distance: 2.2 miles**

**Starting Point:** The trail starts at Telford Way, at the back of the Mannington Retail Park. You can get here by bus - plan your journey at <https://www.swindontravelchoices.co.uk/plan-a-journey/>.

What Three Words: ///crowned.minds.grant

1. Walk down Scott Way, go under the railway bridge and then turn left onto a path signposted "Old Town".
2. Follow this path as it becomes the Old Town Railway Path. Keep going straight ahead. *What to look out for: There are several white stone wheels at the side of the path. They represent Earth, Air, Fire, Water and Conceive.*
3. As you approach Old Town, you will go under the road bridges at Springfield Road and Croft Road. The path then ends and you'll come out into the Signal Way Trading Estate.
4. Turn left after Unit 17 and go up the steps. Follow the path onto Station Approach, which will come out on Newport Street.

***If you are unable to use the steps, then continue through the industrial estate, turn left onto Marlborough Road and then left into Newport Street and continue to Station Approach.***

5. Use the pedestrian crossing to cross Newport Street, then head around the corner onto Croft Road.
6. After 200 metres, the Arts Centre / Old Town Library will be on your right hand side. This is where you can collect your limited-edition badge\* and post your entry. (Library opening hours Mon - Fri 10.30am - 4pm, Sat 10am - 1pm)

If the library is closed, you can enter the prize draw via this QR code or at [www.swindontravelchoices.co.uk/home/activeswindonchallenge/](https://www.swindontravelchoices.co.uk/home/activeswindonchallenge/)

*\*Badges are available for the first 200 people to complete the trail.*



**Congratulations on finishing the walk and we hope you had fun exploring!**

**Getting back to the start:** Bus 25 leaves from Old Town (Prospect - outside the former Swindon Advertiser offices) at 10.45am, 12.45pm and 2.45pm Monday to Saturday and returns to Mannington roundabout. Alternative buses go to Mannington roundabout from Swindon bus station (Services 1, 1a, 1b, Stagecoach 10 and 55)

## ENTRY FORM - Trail #1

Tear off this entry form and post at the Old Town Library

**Name:** \_\_\_\_\_

**Home postcode:** \_\_\_\_\_  
*(for statistical purposes only)*

**Question:** Name any word that is written on any of the stone sculptures along the Old Town Railway Path?

\_\_\_\_\_

**Email address** (Please print carefully):  
*(We will only use your email to inform you if you have won)*

\_\_\_\_\_

**How many people did the trail in your group?**

Adults: \_\_\_\_\_ Children: \_\_\_\_\_

*Deadline to enter prize draw: Midnight on Sunday 8th September 2024*





[www.swindontravelchoices.co.uk](http://www.swindontravelchoices.co.uk)



**SWINDON**  
BOROUGH COUNCIL